



THE POLICE & CRIME COMMISSIONER FOR CLEVELAND

DECISION RECORD FORM

REQUEST: For PCC Approval

Title: Funding for the Local Children Safeguarding Board (LCSB) - Middlesbrough

Executive Summary:

Middlesbrough Safeguarding Children Board (MSCB) which was established in April 2010, is a statutory body made up of organisations which work with children and young people and is the key mechanism for agreeing how relevant organisations in the local area will co-operate to safeguard and promote the welfare of children and for ensuring the effectiveness of what they do.

Funding the MSCB will help to target the below priorities:

- (1) The MSCB will promote the safety and wellbeing of children and young people with a particular focus on those suspected of being at risk.
- (2) The MSCB will work with partner agencies to promote early help and recognise and respond to the neglect of children and young people.
- (3) The MSCB will develop and implement effective communication strategies with a focus on the participation of children and young people.
- (4) The MSCB will work with partner agencies to improve the link with adult services in particular those services working with domestic abuse, parental mental health and substance misuse.

Funding provided by the PCC, facilitates towards the costs of carrying out the activities set out within the MSCB Business Plan (Appendix 1). The PCC will receive regular updates on progress in line with terms and conditions of the grant agreement.

Decision: To fund the Middlesbrough Local Safeguarding Children Board (MSCB), £14,689 per annum, for up to 3 financial years (maximum total of £44,067, subject to annual review) for the period 1st April 2017 – 31st March 2020.

OPCC Lead Officer: Amanda Wilkinson

Contractor Details (if applicable): Middlesbrough Safeguarding Children Board (MSCB), 2nd Floor Civic Centre, Middlesbrough, TS1 9FZ

Implications:

Has consideration been taken of the following:	Yes	No
Financial	<input checked="" type="checkbox"/>	<input type="checkbox"/>
Legal	<input checked="" type="checkbox"/>	<input type="checkbox"/>
Equality & Diversity	<input checked="" type="checkbox"/>	<input type="checkbox"/>
Human Rights	<input checked="" type="checkbox"/>	<input type="checkbox"/>
Sustainability	<input checked="" type="checkbox"/>	<input type="checkbox"/>
Risk	<input checked="" type="checkbox"/>	<input type="checkbox"/>

(If yes please provide further details below)

Decision Required – Supporting Information

Financial Implications: (Must include comments of the PCC's Chief Finance Officer where the decision has financial implications)

The grant agreement will be awarded for a figure of £14,689 per annum, for up to 3 financial years (maximum total of £44,067). The funding for this agreement was included within the Long Term Financial Plan that was approved by the PCC on the 27th February 2017.

Legal Implications: (Must include comments of the Monitoring Officer where the decision has legal implication)

The legal implications of this agreement are laid out within the terms and conditions of the grant agreement.

Equality and Diversity Implications

There are no equality or diversity implications associated within this grant agreement.

Human Rights Implications

There are no Human Rights Implications associated within this grant agreement.

Sustainability Implications

There are no Sustainability implications associated within this grant agreement.

Risk Management Implications

There are no Risk Management implications associated within this grant agreement.

OFFICER APPROVAL

Monitoring Officer

I have been consulted about the decision and confirm that financial, legal, and equalities advice has been taken into account. I am satisfied that this is an appropriate request to be submitted to the Police and Crime Commissioner.

Signed  Date 19/5/17

Police and Crime Commissioner:

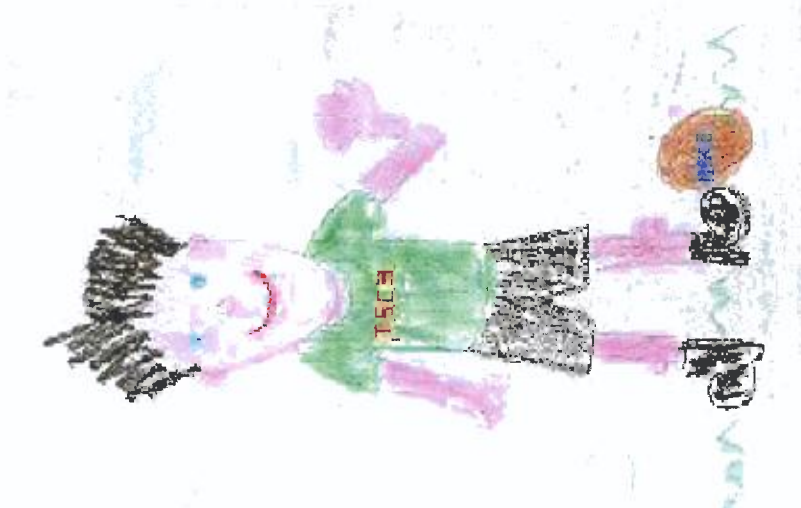
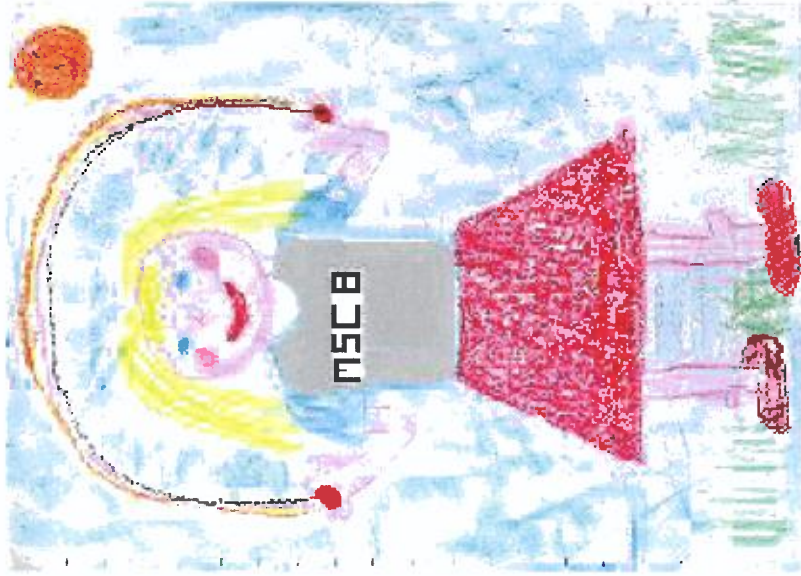
The above request HAS my approval.

Signed  Date 19/5/17

BUSINESS PLAN 2013-2016



MIDDLESBROUGH
Safeguarding Children Board



"Our children's protection is everybody's business"

Our Children's Protection is Everybody's Business

FORWARD

As Independent chair of the Middlesbrough Safeguarding Children Board I am pleased to present this the second Business Plan. It reflects on achievements to date and sets out plans that are designed to further strengthen the arrangements for safeguarding children and young people across Middlesbrough.

The Board performs its statutory co-ordinating and scrutiny role recognising that the key to success lies in shared responsibility and effective joint working across agencies. Early and appropriate intervention is critical and the board continues to ensure that policies, procedures and training programmes are designed to support and strengthen the frontline professional response.

The front line is where it all comes together. It is the health visitors; social workers; teachers; police officers; care workers and countless others (both professional and volunteer) who are in direct and daily contact with children and families. It is these professionals in whom the board seeks to invest. It is their training, judgement and decisions that 'make the difference' and in presenting this plan I want to acknowledge their continued hard work and dedication in a challenging local environment.

The board continues to monitor core safeguarding business through a sub-group structure and scrutinises the work of the Child Death Overview Panel and Learning Review sub-committee. Although the most recent Ofsted inspection and a separate peer review have both reported positively, the board acknowledges that there is no room for complacency with much work still to be done.

Mark R. Braithwaite
Independent Chair MSCB



OUR VISION

“To Work Together as an Interagency Partnership Throughout Middlesbrough to Safeguard and Promote the Welfare of Children”

1. FUNCTION OF THE MSCB

The MSCB will have an authoritative and independent voice working alongside Middlesbrough's CYPT/or equivalent. The MSCB is not responsible for the commissioning or delivery of services to children and their families, but in relation to any safeguarding concerns has an overarching responsibility to:

- a) Raise awareness and communicate to persons and organisations.
- b) Develop policy, standards and procedures for safeguarding and to promote the welfare of children (including thresholds for s17 and s47 enquiries).
- c) Oversee the planning and commissioning of children's services to ensure that safeguarding and promoting the welfare of children is taken into account.
- d) Monitor and evaluate the effectiveness of what is done by the Local Authority and Agencies represented on the Board and the CYPT/or equivalent, both collectively and individually.

The MSCB aims to ensure that safeguarding activities are fully embedded in any services commissioned by or on behalf of Middlesbrough CYPT/or equivalent arrangements and will, if necessary, use the information gained from its monitoring and auditing functions to contribute to or modify the Children and Young Persons' Plan.

In addition, the MSCB is responsible for ensuring that:

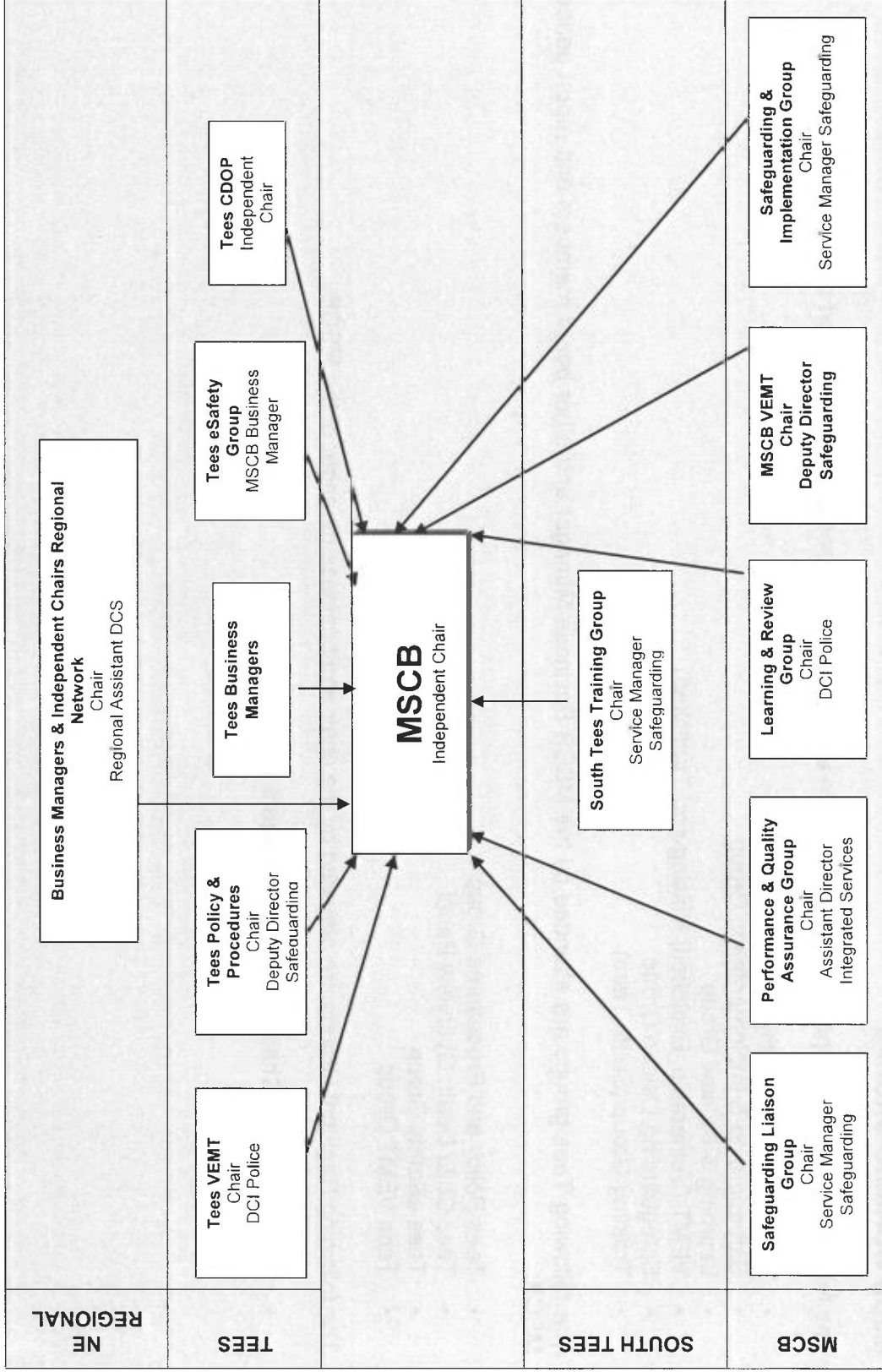
- i) Single agency and multi-agency training on safeguarding and promoting welfare is provided in order to meet local needs.
- ii) There are effective policies and practices in place across all agencies and sectors for checking the suitability of people applying to work with children and for ensuring that the children's workforce is properly supervised.
- iii) Allegations against people working with children are dealt with properly and expeditiously.
- iv) Private fostering arrangements are co-ordinated and effective.
- v) There is effective liaison between organisations and authorities to safeguard children who move between authorities and geographical areas.
- vi) Reviews are carried out of cases where a child has died or has been seriously harmed in circumstances where abuse or neglect is known or suspected in order to advise on lessons that can be learned.
- vii) Information about the deaths of all children in the MSCB area is collected and analysed with a view to identifying any concerns affecting the safety and welfare of children;

Policies and procedures function

This general function has specific responsibilities set out in regulations and primary legislation.

- (a) Developing policies and procedures for safeguarding and promoting the welfare of children in the area of the authority.
- (b) Determining action to be taken where there are concerns about a child's safety or welfare, including thresholds for intervention.

MSCB SUB GROUP STRUCTURE



As part of the governance arrangements attendance at the MSCB and sub groups are monitored and reported to the board.

MSCB WORKING GROUPS

The following working groups support the MSCB in undertaking its responsibilities and report directly to it:

- Performance & Quality Assurance Group
- Safeguarding & Implementation Group
- Learning & Review Group
- VEMT (Vulnerable, Exploited, Missing and Trafficked).
- Safeguarding Liaison Group
- Training Group (South Tees)

The following Tees groups are attended by the MSCB Business Manager and other board members and report periodically to the MSCB:

- Tees Policy and Procedures Group
- Tees Child Death Overview Panel
- Tees eSafety Group
- Tees VEMT Group

The following Regional Groups are attended by the chair and business manager of the MSCB.

- LSCB Regional Chairs/Business Managers Group

Middlesbrough Groups

Performance & Quality Assurance Group – (Previously known as the Monitoring & Evaluation Group) performs a performance monitoring role on behalf of the MSCB. It ensures that child protection and safeguarding activity is monitored on an inter-agency basis in order to identify areas of concern to the Board and promote continuous improvement.

SIG (Safeguarding Implementation) Group – is an amalgamation of the Middlesbrough Policies and Procedures Group, the Communications Group and the Middlesbrough eSafety Group. The aim of the group is to co-ordinate awareness of both child protection and safeguarding issues within agencies and with the public, implement policy/procedures development and quality assurance and co-ordinate the MSCB responsibilities around eSafety.

Training Group – works to ensure that appropriate high quality multi-agency training is provided for statutory agencies that reflects MSCB policy and procedure, enhances and amplifies knowledge and skills and promotes joint understanding of child protection work

Learning & Review Group - the function of the Learning Review group is to quality assure all serious case and other learning reviews and to monitor and evaluate associated action plans. Also to provide advice to the MSCB Chair on whether the criteria for conducting a SCR has been met as outlined Working Together to Safeguard Children.

MSCB VEMT – to co-ordinate work specifically around child sexual exploitation and children/young people missing from home. The group is involved in both national and regional work on this agenda. The group is part of the Tees VEMT structure as of 2013.

Safeguarding Liaison Group – an informal group for professionals to share safeguarding concerns with a direct link to the MSCB for any issues or feedback.

Tees-wide Groups

Tees-wide Policy & Procedure Group - is responsible for developing new and reviewing and amending existing policies and procedures based on experience, research findings, government and professional guidance and the recommendations of case reviews. A local practitioner's practice Group is established to implement and monitor procedures across Middlesbrough.

Tees Child Death Overview Panel – this panel provides a forum that allows for a professional multi-agency examination of all child deaths not just across Middlesbrough but the whole of Tees. There is the potential to improve the safety and welfare of children by identifying danger and risk. Public health and safety issues could be identified for wider environmental and social benefits.

Tees eSafety Group – to monitor the developments in eSafety and oversee the implementation of the Teeswide eSafety Strategy across Middlesbrough. To share good practice across the Tees on safeguarding and the use of new technology.

North East Regional Groups

LSCB Regional Chairs/Business Managers Group – To oversee and co-ordinate regional LSCB issues and share good practice across the region. The group is linked to the North East Safeguarding Vulnerable Children Group via the chair.

Other task-limited working groups - the MSCB may appoint working groups for specific tasks. The terms of reference and membership of such groups will be agreed by the Board.

LINKS TO OTHER BODIES AND FORUMS

In order to carry out its responsibilities satisfactorily the MSCB must also ensure that there are appropriate links to other bodies and forums including the following:

- Health & Well-being Board.
- Adult Safeguarding Board Sub - Committee (Middlesbrough SVAC)
- Crime and Disorder Partnerships—Safer Middlesbrough Partnership
- Youth Justice Board
- MAPPA – through Durham Tees Valley Probation Trust
- MARAC (Multi Agency Risk Assessment Conferences)

These links are achieved through existing members of the MSCB and associated officers.

MSCB & THE CHILDREN & YOUNG PEOPLES TRUST.

The MSCB and Children & Young Peoples Trust (CYPT) have separate chairing arrangements in line with Working Together. The chair of the MSCB sits on the CYPT further strengthening the relationship.

The MSCB Annual Report 2012/2013 and latest Business Plan have been presented to the CYPT, to the Chief Executive of Middlesbrough Council and to the Police and Crime Commissioner for Cleveland.

MSCB AND THE MIDDLESBROUGH HEALTH & WELL BEING BOARD

The MSCB is developing links with the newly formed Health & Well Being Board in Middlesbrough. A number of meetings have taken place between the MSCB and the Director of Public Health and an agreement that the MSCB chair will be invited at least on an Annual basis to present the Annual report and update the Health and Well Being Board on any matters arising. The Director of Public Health has in return presented the Public Health Strategy to the MSCB and has kept the MSCB informed of major developments both in Public Health and regarding the development of the Health and Well Being Board.

MSCB FINANCE – POOLED BUDGET

The MSCB operates a legally constituted pooled budget and the activities of the MSCB, including publications, inter-agency training and administration, are met by financial contributions from the following agencies:

- Middlesbrough Council
- Middlesbrough Schools
- Cleveland Police
- Middlesbrough Primary Care Trust
- Durham Tees Valley Probation Trust
- CAF/CASS
- Youth Offending Service

MSCB BUDGET 2013-2014

Funding Agency	2013-2014	% cont
Middlesbrough Council	£50,600	37.6
Schools	£22,000	16.3
Police	£14,689	10.9
Health	£42,684	31.7
Probation	£832	0.6
YOS	£3,304	2.5
CAFCASS	£550	0.4
Total Contribution	£134,659	100
SCR carry forward	£26,138	
Total Income	£160,797	

Expected MSCB Expenditure 2013-2014/2014-2015/2015-2016

Expenditure	2013-2014	2014-2015	2015-2016
Employees	£71,102	£72,524	£73,975
Training	£30,000	£30,000	£30,000
Training/Learning/YP Events	£8,000	£5,000	£5,000
Professional fees/SCRs	£32,691	£25,000	£25,000
CDOP contribution	£1,200	£1,200	£1,200
Supplies and Services	£1,500	£1,500	£1,500
Website Tees Procedure	£988	£988	£988
Communication	£1,500	£1,500	£1,500
Independent Chair	£12,500	£12,500	£12,500
Expected Expenditure	£159,481	£150,212	£151,663

MSCB finances are managed by Middlesbrough Council. The annual budget for the MSCB's activities covers the period from 1st April to 31st March and is presented for Board approval each year. The budget report includes the following:

- a financial statement for the preceding year's activity;
- a projection for the current year's activities; and
- an outline of spending proposals for the following financial year.

MSCB STRATEGIC PRIORITIES

The aim of this business plan is to identify the MSCB agreed themes and provide an outline strategy that can be developed by partners and sub groups that will produce implementation plans that will deliver against the objectives locally and that will enable review and assurance to the MSCB that objectives are being achieved.

PRIORITY 1

The MSCB will promote the safety and wellbeing of children and young people with a particular focus on those suspected of being at risk.

PRIORITY 2

The MSCB will work with partner agencies to promote early help and recognise and respond to the neglect of children and young people.

PRIORITY 3

The MSCB will develop and implement effective communication strategies with a focus on the participation of children and young people.

PRIORITY 4

The MSCB will work with partner agencies to improve the link with adult services in particular those services working with domestic abuse, parental mental health and substance misuse.

MSCB STRATEGIC PRIORITY 1

The MSCB will promote the safety and wellbeing of children and young people with a particular focus on those suspected of being at risk.

Priority Outcome	Priority Actions	MSCB Lead	Timescale	Evidence	Completed	Link with other strategic plans & National Guidance
MSCB will have a clear understanding of the scope and prevalence of Child Sexual Exploitation and develop a strategy to address Vulnerable, Exploited and Trafficked (VEMT).	MSCB will develop in conjunction with Tees LSCB's a strategic multi-agency action plan to address CSE across Tees.	VEMT Sub Group	Oct 2013.	VEMT Strategy	Y	ACPO Action Plan
	Terms of Reference for the VEMT group agreed across Tees by all four boards.	VEMT Sub Group	Oct 2013.	VEMT ToR	Y	OCC Report 2012
	Where necessary procedural guidance and joint working protocols will be reviewed and revised	VEMT Sub Group Tees Procedures	On -Going	Tees Web Procedures. Practitioner Portal	On-Going	ACPO Action Plan OCC Report 2012
	VEMT to be made a standing agenda item for LSCB's in order that ownership for tackling these issues is shared and sustained.	MSCB	Nov 2013	MSCB Mins	Y	ACPO Action Plan
	VEMT group will ensure multi agency shared ownership of delivering a tactical response to VEMT and will ensure the MSCB establishes;	VEMT	Dec 2013	VEMT Papers		OCC Report 2012 ACPO Action Plan OCC Report 2012
	<ul style="list-style-type: none"> • Terms of Reference for the Operational VEMT • Standard Operating Protocol / Effective Procedures • Action Plan • Developing demonstrable impact/outcome measures 					
	VEMT Group will have clearly defined targets relevant to the plan and each agency objectives.	VEMT	March 2014	VEMT Action Plan		ACPO Action Plan
VEMT strategy will demonstrate clear linkage to relevant to the National/Regional/Tees-wide Multi-agency Objectives.	VEMT	March 2014	VEMT Strategy		OCC Report 2012 ACPO Action Plan	
Safeguarding from CSE training will be part of the MSCB Training Strategy	Training Sub Group	March 2013	Training Programme	Y	OCC Report 2012 WT 2013	

MSCB STRATEGIC PRIORITY 1

Priority Outcome	Priority Actions	MSCB Lead	Timescale	Evidence	Completed	Link with other strategic plans & National Guidance	
MSCB will develop and maintain a local learning and improvement framework which is shared across agencies who work with children	MSCB will be assured that lessons learned from serious incidents within Middlesbrough and where appropriate Teesside and National are embedded within practice.	L&R Group P&QA Group Training Group SIG	March 2015	MSCB Audits	Initiated and On-Going	WT 2013. National Guidance	
	MSCB will ensure itself regarding the quality of safeguarding practice across partner agencies via multi agency audits	P&QA Sub Group	March 2014	Sec11 Audit	Initiated and On-Going	WT 2013. Published SCR	
	MSCB will ensure staff in partner agencies have awareness of lessons learned from SCR commissioned by the MSCB.	P&QA Sub Group	April 2013	Training Communication Strategy	Initiated and On-Going	WT 2013.	
	MSCB will conduct reviews of cases which do not meet the criteria for a SCR but which can provide lessons of how organisations are working together to safeguard and promote the welfare of children.	L&R Sub Group MSCB Ind Chair	April 2013	L&R Minutes	Initiated and On-Going	WT 2013.	
	MSCB will agree with partners an information Sharing Protocol	P&QA Sub Group	Jan 2014	P&QA Mins MSCB Website		WT 2013.	
	MSCB agree Single assessment framework	P&QA Sub Group	March 2014	P&QA Mins MSCB Website		WT 2013.	
	MSCB to agree and publish a Threshold Document	P&QA Sub Group	March 2014	P&QA Mins MSCB Website		WT 2013.	
	MSCB will review learning and support Tees CDOP.	CDOP	Jan 2014	CDOP Mins		WT 2013.	
	MSCB will be assured that arrangements for the safeguarding and well-being of children and young people who are Looked After or Privately Fostered are robust.	The MSCB will receive assurance via Annual Report, that the arrangements for Private fostering remain of high quality	Well-being Care and Learning	Oct 2013	Private Fostering Annual Report	Annual Reporting to MSCB	WT 2013
		MSCB will continue to support the Middlesbrough MALAP and receive reports regarding and implementation of the LAC strategy	MALAP	May 2013	MSCB Brief to MALAP MSCB Newsletter	Initiated and On-Going	Middlesbrough LAC Strategy
The MSCB will be assured that partner agencies are working collaboratively to promote safety and address risk taking behaviour with children and young people across Middlesbrough	MSCB will work with local initiatives regarding issues of alcohol and substance misuse amongst young people and their families.	Risk Reduction Manager	March 2014	Report to MSCB		Thematic Review of Adult & Children Services Mental Health and Substance Misuse	
	MSCB will work with partner agencies to improve sexual health awareness with teenagers	Risk Reduction Manager	March 2014	Report to MSCB		VEMT Strategy ACPO Action Plan.	
	MSCB will continue to promote the awareness of eSafety with children young people and partner agencies.	Tees eSafety Group	March 2014	eSafety Strategy, Sec 11 Audit	Initiated and On-Going	Northern Grid Guidance	
	MSCB will promote the safeguarding of children and young people within licensing authorities and licensed establishments.	Risk Reduction Manager VEMT Group	March 2014	MSCB VEMT Reports and minutes		ACPO Action Plan	

MSCB STRATEGIC PRIORITY 2

The MSCB will work with partner agencies to promote early help and recognise and respond to the neglect of children and young people.

Priority Outcome	Priority Actions	MSCB Lead	Timescale	Evidence	Completed	Link with other strategic plans & National Guidance
The MSCB will work with partners to develop and implement an Early Help Strategy	MSCB audit training and its effectiveness across partner agencies.	Training Group	March 2014			WT 2013.
	MSCB training will include training events, which address strategies to identify emerging problems, and to respond to identified needs.	MSCB Business Unit	March 2014	MSCB Annual Report	On-going	WT 2013.
	The MSCB will work with partners to develop and agree a 'Threshold' document which identified the process for early help assessment and the type and level of early help service provided.	Training Group Thresholds Task & Finish Group	January 2014	MSCB minutes		
MSCB will have a robust understanding of the quality of multi-agency Child Protection practice and evidence that this information is effectively used to challenge and drive on-going improvements.	The MSCB Training group will analyse and report back to the MSCB feedback from audits, training, training events and the impact on practice.	Training Group	March 2014	MSCB Minutes	On-Going	WT 2013.
	MSCB will be assured that all agencies working with children and young peoples have robust policies and procedures to ensure effective safe practice.	SIG Tees P&P Group	March 2014	Section 11 Audit Minutes	Annual Reporting and On-Going	
The MSCB will work with partners to establish systems, which evaluate and report on the quality and impact of work to ensure that disabled children are recognised and responded to effectively.	MSCB to conduct an audit of Safeguarding for Children with a Disability	P&QA	March 2015	Section 11 Audit P&QA Report		WT 2013.
	MSCB will consider recommendations made by the Services for Deaf Children Report and ensure that safeguarding is robust.	P&QA Group	Jan 2013	Services for Deaf Children Report		

MSCB STRATEGIC PRIORITY 3

The MSCB will develop and implement effective communication strategies with a focus on the participation of children and young people.

Priority Outcome	Priority Actions	MSCB Lead	Timescale	Evidence	Completed	Link with other strategic plans & National Guidance
The MSCB will develop a communication Strategy for collecting feedback from children, young people and their families.	MSCB will establish improved links with Young People's Councils and other groups.	SIG	March 2014	Report from Young People Communication Events		WT 2013.
	MSCB will ensure that communication is accessible to children, young people and their families.	SIG	December 2013	Report from Young People Communication Events		Ofsted Action Plan
	MSCB to undertake audits of the engagement and participation of children and young people and their families in meetings about them.	P&QA	March 2015	P&QA Audit Reports		WT 2013.
	Young Persons Safeguarding Event to be planned at My Place involving a number of groups across Middlesbrough	SIG	March 2014	MSCB Report on Event.		Ofsted Action Plan
	MSCB will commission and co-ordinate a Cyber / eSafety event with Primary Schools across Middlesbrough	SIG	October 2013	MSCB Report Event Posters MSCB Newsletter	Y	Ofsted Action Plan
						WT 2013.
						Ofsted Action Plan

MSCB STRATEGIC PRIORITY 4

The MSCB will work with partner agencies to improve the support provided by adult services in particular those services working with domestic violence, parental mental health and substance misuse.

Priority Outcome	Priority Actions	MSCB Lead	Timescale	Evidence	Completed	Link with other strategic plans & National Guidance
The MSCB will work with partners to raise the profile of Domestic Violence and support projects that support and safeguard children and young people	MSCB will support local initiatives working with families suffering domestic violence including young people and their partners.	Safer Middlesbrough Partnership	March 2014	DV Strategy		DoE Guidance
	MSCB will work with partner agencies to improve domestic violence awareness.	Safer Middlesbrough Partnership	March 2014	MSCB Mins DV Strategy		DoE Guidance
	MSCB will continue to promote the awareness of domestic violence with young people and partner agencies.	Safer Middlesbrough Partnership	March 2014	MSCB Mins DV Strategy		DoE Guidance
The MSCB will be assured that partner agencies are working collaboratively to promote the issues linked with Parental Mental Health and the impact on children and young people.	MSCB will work with local initiatives and agencies regarding issues of parental mental health and the impact on young people and their families.	Risk Reduction Manager	March 2015	Report to MSCB		Thematic Review of Adult & Children Services Mental Health and Substance Misuse
	MSCB will ensure multi-agency training is available to professionals working across children's services in Middlesbrough.	Training Group	April 2013		Initiated and on-going	Thematic Review of Adult & Children Services Mental Health and Substance Misuse
The MSCB will work with partner agencies to raise awareness of substance misuse in young people and support the treatment programmes and other initiatives across Middlesbrough	MSCB will work with partner agencies to improve substance misuse awareness with teenagers	Risk Reduction Manager	March 2015	Report to MSCB		Thematic Review of Adult & Children Services Mental Health and Substance Misuse
	MSCB with partner agencies will promote the awareness of parental substance misuse and the impact on children and young people.	Safer Middlesbrough Partnership	March 2015	Report to MSCB		Thematic Review of Adult & Children Services Mental Health and Substance Misuse

